

INSPEKTOR® Touch Digital Borescope Systems

Includes Product #:

INS 9000 INSPEKTOR Touch Monitor

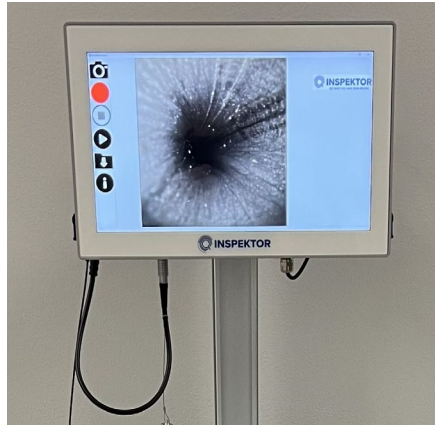
INS 9001 INSPEKTOR Touch Borescope

INS 9002 INSPEKTOR Touch Mini Borescope

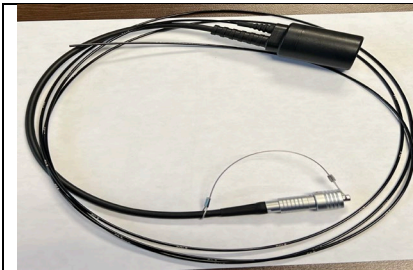
INS 9003 INSPEKTOR Touch Borescope

INSPEKTOR® is a registered trademark of NCI, an LLC of Thomas Scientific

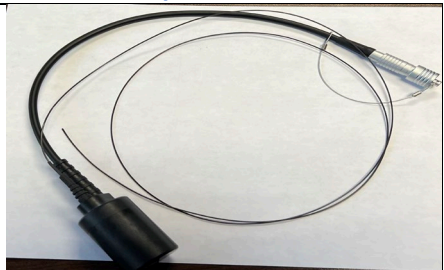
INSPEKTOR® Touch Monitor (INS9000)



INSPEKTOR Touch® Borescopes



Touch 1.9mm (INS9001)



Touch 1mm (INS9002)

Owner Manual

Table of Contents

Page 3-4	Intended Use Indications for Use Contraindications for Use
	General Warnings
Page 4-5	Product Description
Page 6	Inspection of the INSPEKTOR® Touch Borescope Cleaning and Disinfection of the INSPEKTOR Monitor (Prod. # INS9000)
Pages 6-8	Cleaning and Disinfection of the INSPEKTOR® Touch Borescope (Prod. # 9001, 9002 & 9003). High Level Disinfection
Page 9	Compatible Sterilization Methods for the INSPEKTOR® Touch Borescopes (Prod. # 9001, 9002 & 9003)
Page 10-12	INSPEKTOR® Touch System Set Up Mounting Instructions
Page 12	Software Installation
Page 13	INSPEKTOR® Touch Environmental Conditions and Electrical Requirements. Warranty
Page 14	NCI Address

The following - Instructions for Use - are applicable to the INSPEKTOR® Touch Borescope Systems.

**Including Model:
INS9000**

Intended Use

The INSPEKTOR® Touch Digital Borescope Systems are waterproof and are patented and designed to work in wet and dry environments. They are used to provide visualization of working channels and lumens in surgical instruments and endoscopes larger than 1.2 mm. The systems allow the technician to inspect the lumens during and after the cleaning process to visually confirm that they are void of foreign material.

Indications for Use

Visual Inspection of endoscope working channels and surgical instrument lumens to confirm they are cleaned to the technician's expectations.

Contraindications for Use

The INSPEKTOR® CT Borescopes are not intended for use in human patients.

GENERAL WARNINGS

1. The INSPEKTOR® Touch Borescopes are polymer coated flexible devices. Avoid sharp metal edges when either inserting or retracting the INSPEKTOR® Touch Borescope.
2. Follow the cleaning, disinfecting, and sterilization instructions provided in this manual.
3. Do not autoclave INSPEKTOR® devices.
4. Do not attempt to service any part of this product. **
5. To ensure operator safety, read and understand this manual before using the INSPEKTOR® Borescope and monitor.
6. The INSPEKTOR® Borescopes emits visible light energy from its distal end. Avoid looking directly at this emitted light or directing it toward others.
7. Carefully inspect the external surfaces of the INSPEKTOR® Borescopes to assure they are smooth and free of any protrusions or sharp edges.

8. Do not bend device below a 20 mm radius or to the point of kinking. Excessive bending may cause damage to the device and render the INSPEKTOR® Touch Borescope inoperable.
9. Applying excessive force to push an INSPEKTOR® Borescope past an obstacle could result in damage to the device. If the INSPEKTOR® Borescope requires significant push force, observe the monitor and attempt to avoid the obstacle by manipulating the flexible scope.
10. Avoid rubbing the borescope against sharp edges. This can cause damage to the device.
11. Store between 60° – 90°F. Keep away from magnetic fields while storing.
12. Do NOT use the INSPEKTOR® Controller Monitors in excessively high temperatures above 120° F, as the materials of construction are not designed to operate under these conditions.
13. Marginal INSPEKTOR® Touch Borescope light Leaks are common and may exist on new scopes. This does not affect the function of the INSPEKTOR® Touch Digital Borescope System.
14. Disinfectants may cloud the monitor screen. Wipe any disinfectant fluid from the screen with a damp soft cloth and water.
15. INSPEKTOR® Touch Borescopes should not be exposed to temperatures in excess of 212 degrees F.
16. If the INSPEKTOR® Touch is used in a manner not specified in the instructions for use, the protection provided by the equipment may be impaired.

Product Description

Both the INSPEKTOR® Touch are comprised of two components. The INSPEKTOR® Monitor houses the camera control board and the monitor, in a waterproof (IP65)* compartment. **The INSPEKTOR® Touch scopes only work with the Inspektor Touch monitor**

The INSPEKTOR® Touch Systems are patented and designed to work in wet and dry environments and are used to inspect small lumens and working channels of surgical instruments and endoscopes for foreign matter. This allows the cleaning/sterilization processing technicians to determine whether their surgical equipment is visually free from foreign matter.

INSPEKTOR® Touch Monitor's waterproof status, as defined by the International Electro Technical Commission is IP65 and INSPEKTOR® Touch Borescopes are IP67.

Caution:

Turn off the INSPEKTOR Touch® Monitor when unplugging either INSPEKTOR borescope or when plugging in a borescope. Turn the monitor on again after exchanging the borescope.

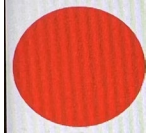
Warning:

Do not submerge the INSPEKTOR Touch® Box in any fluid.

INSPEKTOR Touch® Operation



Press the **CAMERA** button to take a picture



Press the **RECORD** button to start recording video



Press the **STOP** button to stop recording



Press the **PLAY** button to begin a new action



Software information

Inspection of the INSPEKTOR® Touch Borescope

(Prod. # 9001, 9002 & 9003)

It is important to visually inspect INSPEKTOR® Borescopes for signs of excessive wear or deterioration. Inspect Borescope Daily. Possible indications of wear that would require replacement would include:

- Unacceptable or poor image quality
- Cracking, tears or degradation of the sheathing or epoxy joints

INSPEKTOR Touch® Digital Borescope System Cleaning Instructions

Cleaning and Disinfection of the INSPEKTOR Touch® Monitor

Cleaning and Disinfection – To remove debris, wipe the INSPEKTOR® Touch Controller Monitor with a soft, nonabrasive cloth using 70% isopropyl alcohol. Allow proper contact time. Wipe the screen with an appropriate 70% isopropyl alcohol wipe.

Caution: Do not wipe down the INSPEKTOR® Touch Controller Monitor without the INSPEKTOR® Borescope connected.

Cleaning and Disinfection of the INSPEKTOR® Touch Borescope (Prod. # 9001, 9002 & 9003)

The INSPEKTOR® Touch Digital Borescope is used to inspect surgical instrument lumens and endoscope channels in the sterile processing department or in endoscopy. The inspection of these inner surfaces aids in the visualization of foreign debris and bio-burden and further assures their removal before the sterilization of instruments or high-level disinfection of endoscopes. The INSPEKTOR® Borescopes may be used on either the dirty side or the clean side of the Sterile Processing Department or in the Endoscopy reprocessing area. The INSPEKTOR® Borescope should be cleaned in the manner described below to prevent cross contamination of instruments or endoscopes with foreign debris

or bio-burden. **Note:** It is further recommended that the INSPEKTOR® Borescopes should be quickly wiped between each individual instrument inspection with a water moistened fiber-free cloth to remove any adherent foreign debris or bio-burden.

Cleaning – Dirty Side

1. **Clean and Disinfection** – Begin by cleaning the INSPEKTOR Touch Borescope fiber. The INSPEKTOR® Touch Borescope may be wiped with a 70% isopropyl alcohol wipe. Follow the manufacture’s cleaning agent’s instructions for use. Wipe with a water moistened a fiber-free cloth. Follow this process after each set of instruments is cleaned
 - Connector cap must be securely placed on connector before cleaning or submersion in fluid.
 -
2. **High Level Disinfection (2 ways)**

High level Disinfection may be achieved by:

- High level disinfection may be achieved by submersing the INSPEKTOR® Borescope in a Cidex® OPA solution or like product and mix according to the manufacturer’s Instructions. (**Note:** The Connector Cap must be securely snapped into place before submersion.) Rinse and wipe with a fiber cloth
- Wiping the Inspektor Touch® Borescopes with a hospital approved Tuberculocidal wipe with appropriate contact time, follow by wiping down with water moistened fiber free cloth

Note: Sterilization of the INSPEKTOR® Borescope is not required if high level disinfection is utilized.

Cleaning – Clean Side

1. **Disinfection** - If the INSPEKTOR Touch® Borescope comes in contact with any visible foreign matter, it should be cleaned with a hospital approved disinfectant wipe as noted in **Cleaning Dirty Side**. **The scope should then be cleaned using High Level Disinfection, instructions listed above, to prevent any cross contamination prior to reuse on the clean side**
2. **High Level Disinfection**
 - See HD Disinfection Dirty side

Note: Sterilization of the INSPEKTOR Borescope is not required if high level disinfection is utilized.

If the INSPEKTOR® Touch Borescope is disconnected from the INSPEKTOR® Touch Monitor, the INSPEKTOR® Touch Borescope protective cap must be placed securely on the proximal electronic end of the connector prior to wiping or submersing the INSPEKTOR® Touch Borescope. This is accomplished by lining up the red dots on the connector and the connector cap and pushing until they click together.

Compatible Sterilization Methods for the INSPEKTOR® Touch Borescopes (Prod. # 9001, 9002 & 9003)

- ✓ STERIS V-PRO® Low Temperature Sterilization Systems
 - STERIS SYSTEM 1E
 - V-PRO® 1 Standard Cycle
 - V-Pro® 1 Plus Lumen & Non Lumen Cycles
 - V-PRO® max Lumen, Non-Lumen & Flexible Cycles
 - V-PRO® 60 Lumen & Non-Lumen Cycle.

Follow the instructions provided with the STERIS equipment for sterilization processing.

✓ STERRAD®

- 100S,
- 50
- 200
- NX, and 100NX systems.

Follow instructions provided with STERRAD® equipment for sterilization processing.

WARNING: Do not reprocess the INSPEKTOR® Touch Borescope using steam sterilization, autoclave, or dry heat. Do not [place the INSPEKTOR CT Borescope into an automatic washer disinfectant. Use of these processes will result in damage to the instrument and void its warranty.

INSPEKTOR Touch System Set Up

When using the INSPEKTOR® Systems around a wet field, the INSPEKTOR® Touch Monitor must be plugged into a Ground Fault Interrupter (GFI electrical outlet)



A B C
Bottom of INSPEKTOR Touch® Monitor

A	INSPEKTOR® Touch Scope Camera Port	Remove the protective cap from the INSPEKTOR® CT Scope camera connection. Line up the red dots and securely push the connector into this port.
B	Waterproof USB Drive Port	Insert USB Drive into port to store images and video <i>*note: USB drive must be plugged in for capturing of images.</i>
C	Power Button	Press power button to turn on monitor press again to turn off

Mounting Instructions

Mounting the INSPEKTOR® Monitors (product INS9000) onto the Wall Mount (product INS6005):

- Remove the four screws on the posterior of the INSPEKTOR® Touch Monitors
- Place the Wall Mount on the back and secure it to the INSPEKTOR® Touch Monitor with the four screws in their respective screw holes (follow the Wall Mount Instructions).
- Confirm that all four of the screws are tight
- Confirm the INSPEKTOR® Touch Monitor’s power adapter is accessible when it is connected and disconnected.)

INSPEKTOR® Touch Environmental Condition & Power Requirements:

- Indoor use only
- Power requirements: 100-240V~, 1.0A, 50/60Hz
- Maximum altitude up to 2000 m
- Temperature range 5°C to 40°C
- Maximum relative humidity 80% for temperatures up to 31°C decreasing linearly to 50% relative humidity at 40°C

Warranty

The INSPEKTOR® Touch Digital Borescope System is warranted, when new, to be free of defects in material and workmanship and to perform in accordance with the manufacturer's specifications when subject to normal use and service for a period of one year from the date of purchase. NCI Inc. at its option, will either repair or replace any components found to be defective or at variance from manufacturer's specifications within this time at no cost to the purchaser. It shall be the purchaser's responsibility to return the device directly to NCI, Inc. after receiving a Returned Material Authorization Number from NCI, Inc. Customer Service Department. Prior to returning the device, it shall be the purchaser's responsibility to clean and disinfect the device and to package it in a manner that minimizes the possibility of shipping damage. Repair or replacement of the device as provided above shall be the sole and exclusive remedy for any breach of the warranty.

**Opening or servicing of the INSPEKTOR® Touch Monitor by anyone other than the manufacturer affects the water-resistant nature of the monitor and will void the warranty. If any component of the Touch needs service, obtain a Return Authorization Number by calling: 763-427-2907.

The INSPEKTOR® Touch is manufactured to NCI's. exclusive specifications by:

Myriad Fiber Imaging Tech,
Inc. 56 Southbridge Road
Dudley MA 01571



VPRO® - is a registered trademark of Steris plc

Sterrad® and Cidex® - are registered trademarks of Advanced Sterilization Products

Oxivir® is a registered trademark of Diversey, Inc.

OxyCide™ – is a Trademark of Ecolab

Sani Cloth® Sani-HyPerCide® is a registered trademark of PDI, Inc.

NCI, an LLC of Thomas Scientific

7125 Northland Terrace N

Suite 100

Brooklyn Park, MN 55428

INSPEKTOR® - is a registered trademark of NCI, Inc.